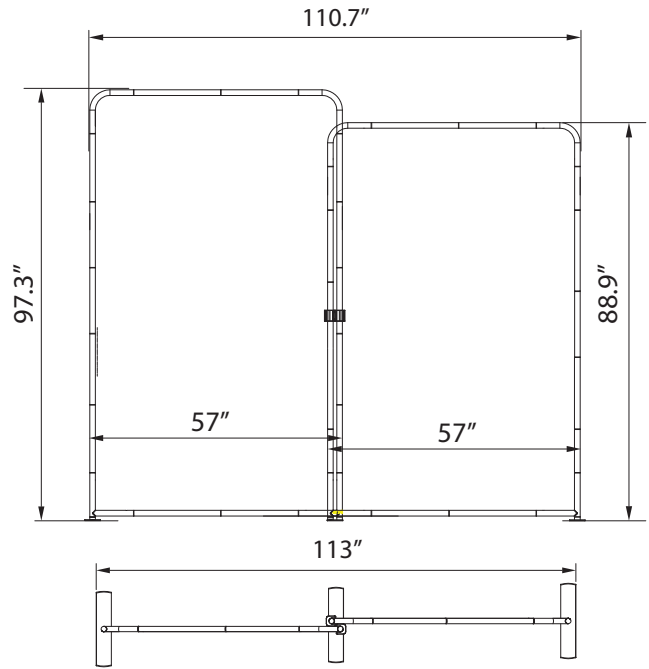


# Waveline Scallop B

WLM-SCALLOP-B



\*Shown with optional CA605 case & lighting

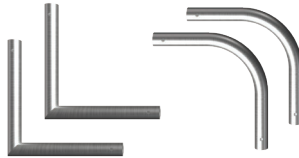


## PARTS INCLUDED

**Straight Poles:** (2)WLM#05  
(4)WLM#03  
(2)WLM#06



**Corner Poles:** (4)WLM#90  
(4)WLM#35



**Feet:**



(2) Single Edge Feet  
WLM#22E



(1) Double Left Feet With Necking  
WLM#22L



(2) Soft Bag



(1) Double U-Shaped Clamp  
WLM#27



(2) Fabric Graphics



## DISPLAY CONSTRUCTION

Aluminum frame with aluminum support feet

## LIMITED WARRANTY PERIODS

- Frame : Lifetime

## GRAPHIC MATERIAL & FINISHING

Top grade YKK zippers along bottom of display.  
Dye sublimated on One Planet, 100% recycled, fabric

Bottles recycled

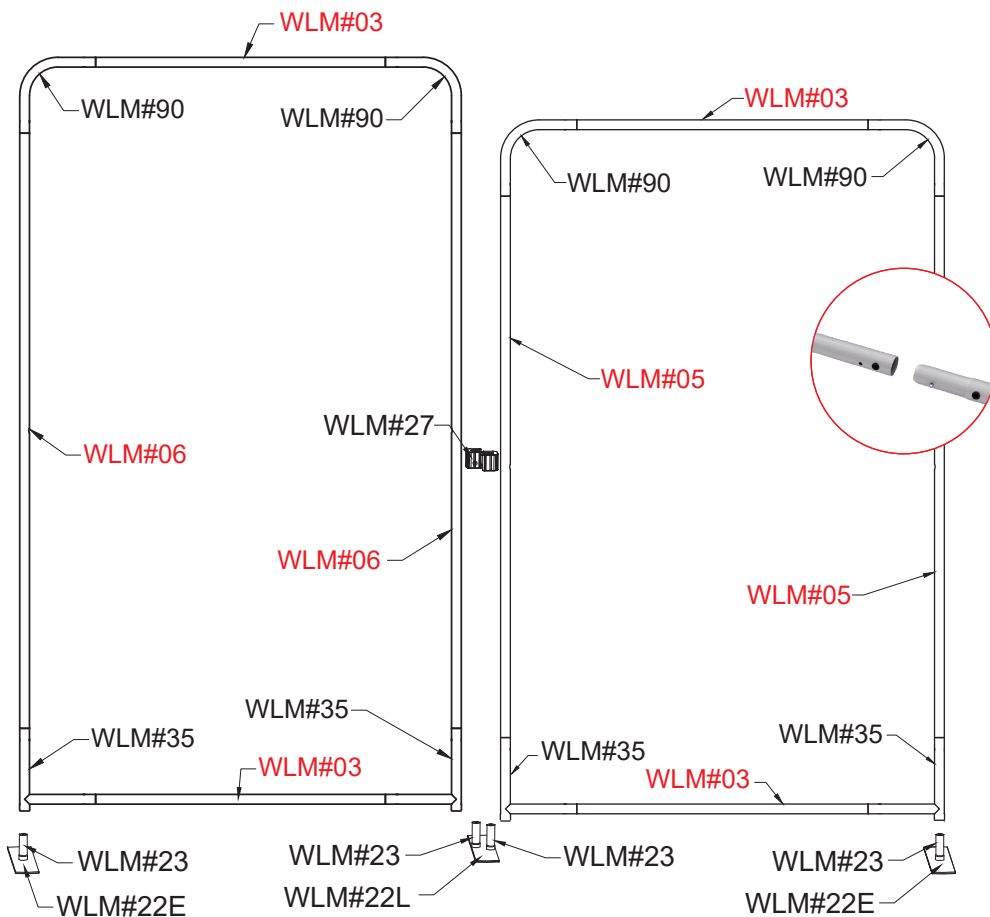
**166**

## DIMENSIONS

Assembled Unit	113" w x 96.3" h
Graphic Size	(1) 57" w x 88.9" h (1) 57" w x 96.3" h
Shipping Box	(2) 36" w x 14" h x 14" d, 31 lbs total

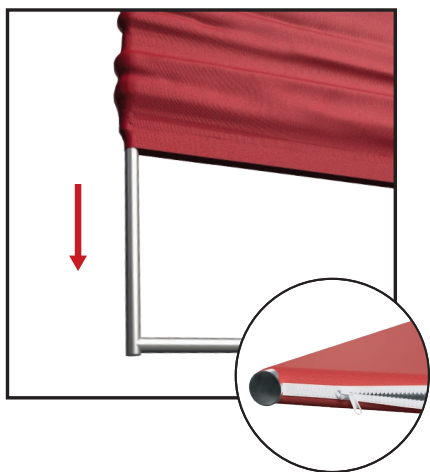
# Waveline Scallop B

WLM-SCALLOP-B

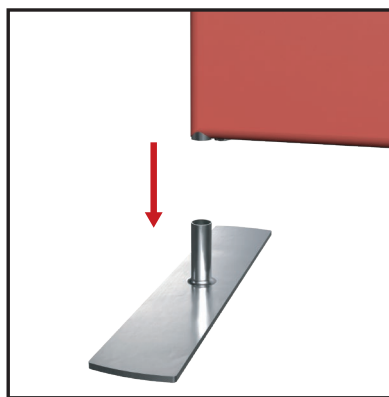


WLM-SCALLOP-B	
QTY	PART NUMBER
4	WLM#23
4	WLM#35
2	WLM#22E
1	WLM#22L
1	WLM#27
4	WLM#90
4	WLM#03
2	WLM#05
2	WLM#06

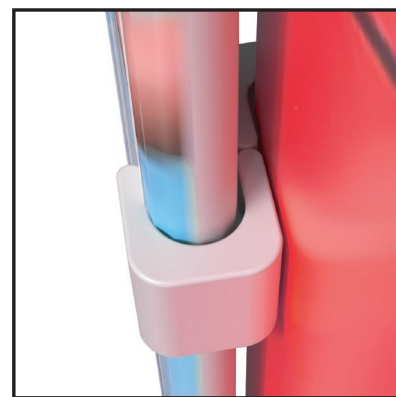
- 1 Lay out parts according to the assembly diagram and push the pipes together.



- 2 Feed the fabric from the top of the frame, only a few feet at a time. Close the zipper.



- 3 Set up the feet in the position that you want to erect the stand, lift the panel(s) and fit on the feet.



- 4 To lock the frames together, use the "S" shaped clamp. If you have a header in the kit you can fix to the top by using the clear plastic clips.